

# INTERIOR DESIGN<sup>®</sup>

MAY 31  
2012



market tabloid  
**feasting on design**

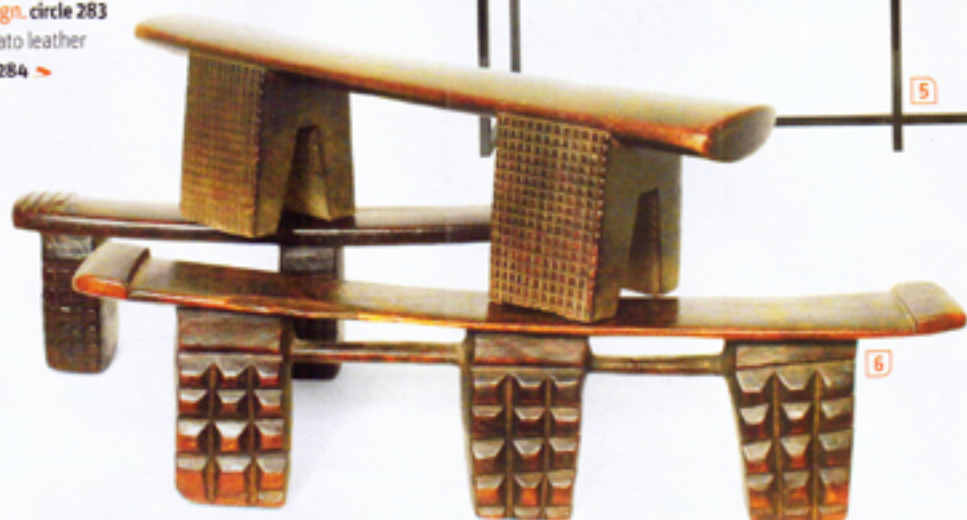
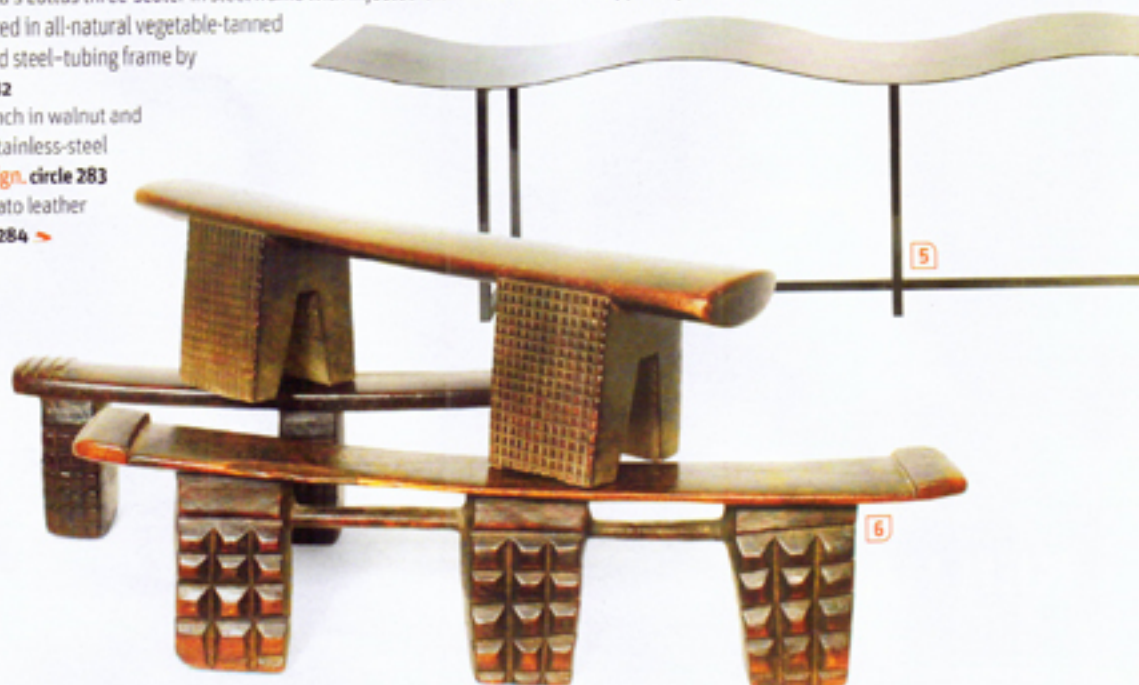
## seating

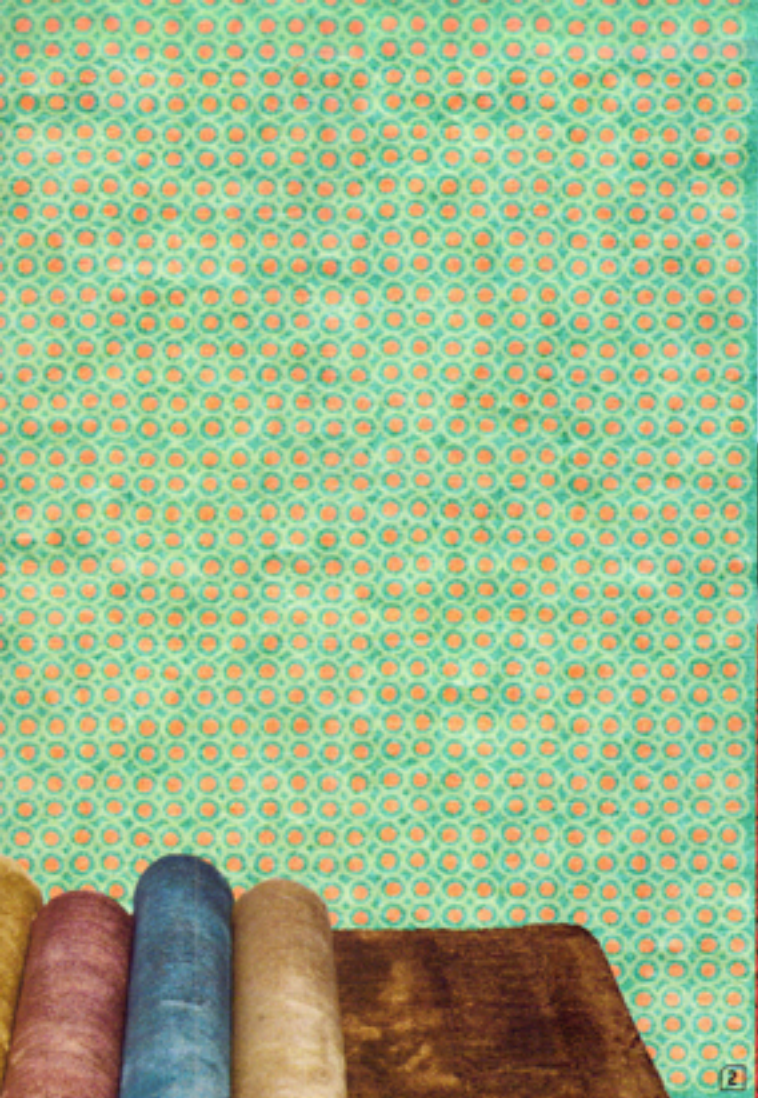


## you're benched!

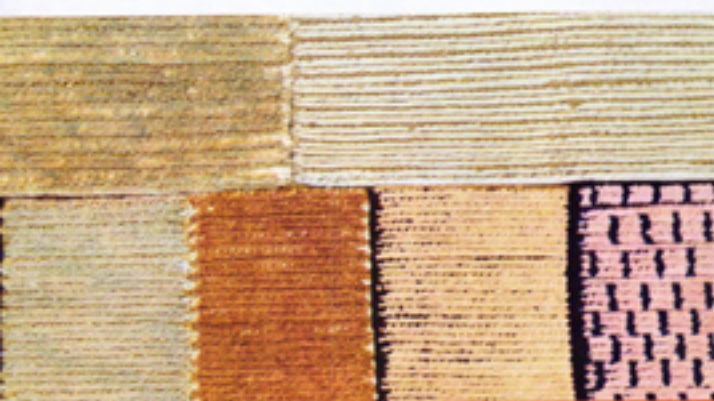
Getting sent here is more privilege than penalty

1. Todd Tyler's Highline bench in walnut and textured leather with bronze legs by **Blue Leaf Hospitality**, circle 275
2. Lievore Altherr Molina's Slam bench in plywood, polypropylene, and aluminum by **Sellex S.A.**, circle 276
3. Logan settee in walnut by **Patagonia**, circle 277
4. MBE-06 upholstered bench by **MeS**, circle 278
5. New Wave steel bench with chrome finish by **Intérieurs**, circle 279
6. Amasumpa benches in solid reclaimed wood with hand-carved and -rubbed finish by **NOA Imports**, circle 280
7. Lievore Altherr Molina's Lottus three-seater in steel frame with injected-aluminum arms and support by **ENEA**, circle 281
8. Moo bench upholstered in all-natural vegetable-tanned cowhide with blackened steel-tubing frame by **Uhuru Design**, circle 282
9. Arik Levy's Argon bench in walnut and leather with polished stainless-steel legs by **Bernhardt Design**, circle 283
10. Gordon sofa in tomato leather by **Walter Knoll**, circle 284 ➔





**touch me, feel me**



## flooring

Hands-on rugs with tactile appeal

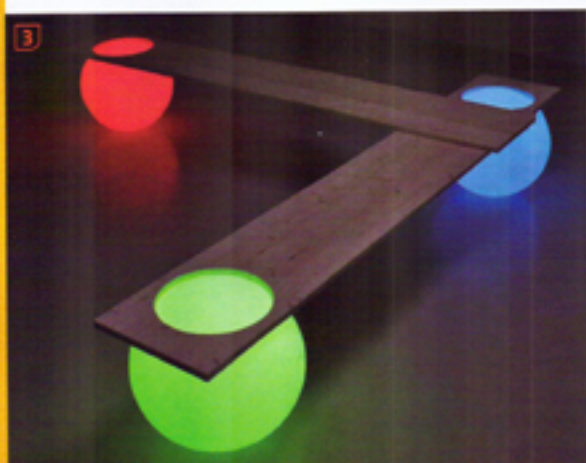
1. Vintage Wash Silk rugs hand-knotted in lemon green, grape, snorkel blue, wood ash, and dark brown by **Rosemary Hallgarten**, **circle 613**
2. Cuernavaca hand-knotted, -cut, and -woven GoodWeave-certified rug in Tibetan wool and Chinese silk in coral/teal by **Gary Cruz Studio**, **circle 614**
3. Looping hand-assembled polyester rug in red by **Lepere**, **circle 615**
4. Digital hand-tufted and -looped wool, cotton, linen, and bamboo rug in Pacific by **Intérieurs**, **circle 616**
5. Tribu Glam 77 percent wool flatweave rug in red print with latex backing by **Lepere**, **circle 617**
6. Lush Life 24-inch-square tiles in Eco Solution Q nylon fiber by **Shaw Contract**, **circle 618**
7. Khabjalosha GoodWeave-certified rugs in hand-carded and -spun Himalayan wool and hand-extracted and -spun hemp, silk, and linen by **Stephanie Odégard**, **circle 619** ➔

## lighting



### double duty

They do the job and then some



1. MSK Illumination's Lumentatrix LED panel system in polished aluminum by **Architectural Art & Technology**, circle 737

2. Pax chandelier in steel and stainless-steel mesh accented with a resin and papier-mâché bird by **Intérieurs**, circle 738

3. Manfred Kielnhofer's LED Glowing Light Ball bench in Plexiglas and wood by **Technik Design**, circle 739

4. Fork Light in ash and steel with bird-shaped polypropylene shade by **Nick Fraser**, circle 740

5. Javier Mariscal's Solea sconce with white-glass inner diffuser and rolled-glass outer panels by **Leucos**, circle 741

6. Parábola fluorescent-lit mirror in matte-white polyurethane by **B. Lux**, circle 742

7. Nomad cordless LED table light in polyethylene by **Space Lighting**, circle 743

8. Benoit Convers's Diva Lucia lamp-console in high-pressure laminate by **lbride**, circle 744 ➔

